



Monitoring Salinity and Enterococci Levels in North Myrtle Beach, South Carolina

By: Hunter Bulin



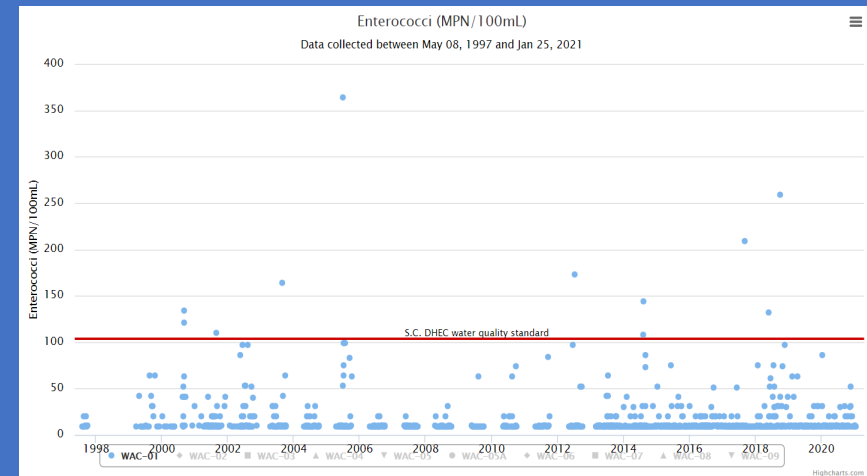
SCAN ME

Introduction

North Myrtle Beach takes pride in its beaches, and one important factor of that is how safe and clean the water is. Measuring Salinity is a test to tell if the water is safe while measuring Enterococci content is a method of determining if the water is clean. Salinity is the measurement of salt content per liter of water and Enterococci is an indicator bacteria commonly found in the water.

Results and Conclusion

As seen in the time charts to the right, over the past twenty years there has been only a handful of times where the Enterococci and Salinity levels were out of the norm. Through research I have determined that those times were during large/ major storms. In conclusion, the waters at North Myrtle Beach are safe to swim, providing it is not during or immediately after a large storm.



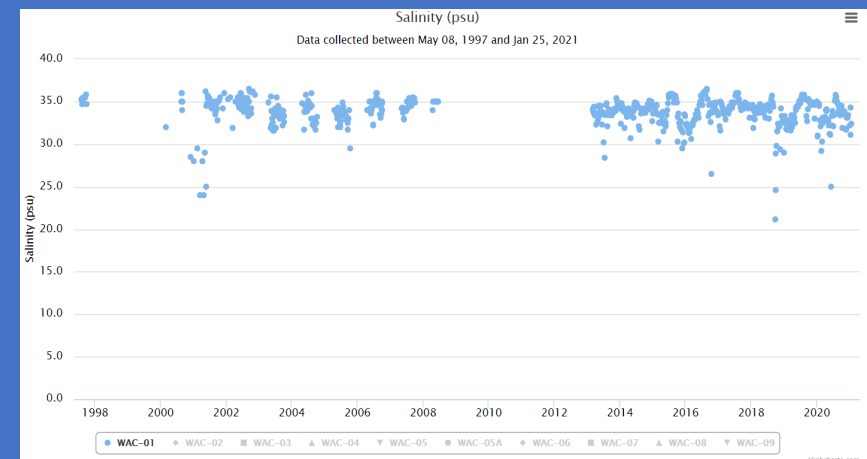
Methods

Salinity

- The most common and simplest way to measure Salinity or salt content of water is to measure out one liter of salt water and evaporate the water until only the salt is left behind. Then just measure your results.

Enterococci

- Enterococci is an indicator bacteria found in poop. The most used method of measuring it is with a testing kit or strips. For the kit, water is put into the device, and it reads the number of bacteria. Testing strips are pieces of paper, in the shape of gum wrappers, that are stuck in the water. The strip will change colors depending on the number of bacteria.



Introduction

North Myrtle Beach takes pride in its beaches, and one important factor of that is how safe and clean the water is. Measuring Salinity is a test to tell if the water is safe while measuring Enterococci content is a method of determining if the water is clean. Salinity is the measurement of salt content per liter of water and Enterococci is an indicator bacteria commonly found in the water.

Methods

Salinity

- The most common and simplest way to measure Salinity or salt content of water is to measure out one liter of salt water and evaporate the water until only the salt is left behind. Then just measure your results.

Enterococci

- Enterococci is an indicator bacteria found in poop. The most used method of measuring it is with a testing kit or strips. For the kit, water is put into the device, and it reads the number of bacteria. Testing strips are pieces of paper, in the shape of gum wrappers, that are stuck in the water. The strip will change colors depending on the number of bacteria.

Results and Conclusion

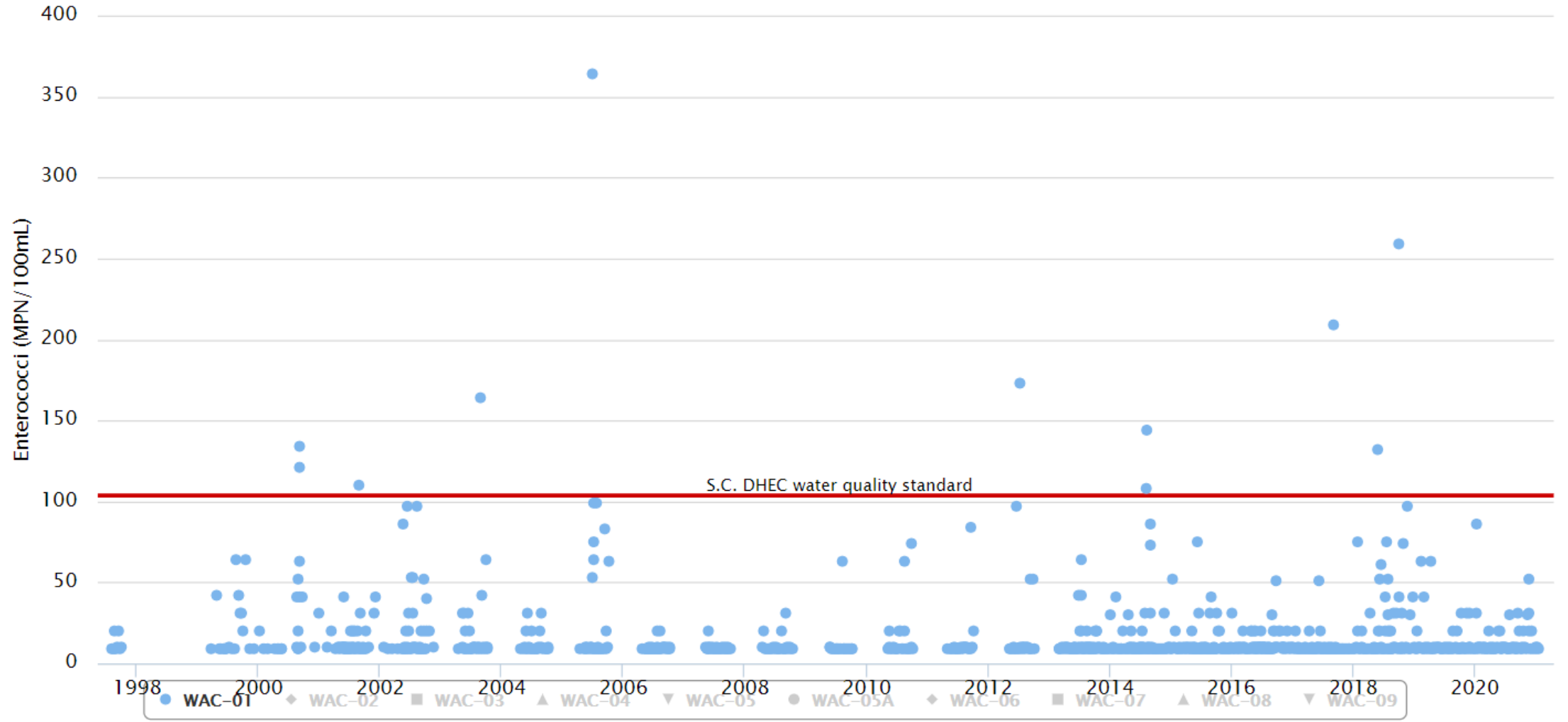
As seen in the time charts to the right, over the past twenty years there has been only a handful of times where the Enterococci and Salinity levels were out of the norm.

Through research I have determined that those times were during large/ major storms. In conclusion, the waters at North Myrtle Beach are safe to swim, providing it is not during or immediately after a large storm.

Enterococci (MPN/100mL)



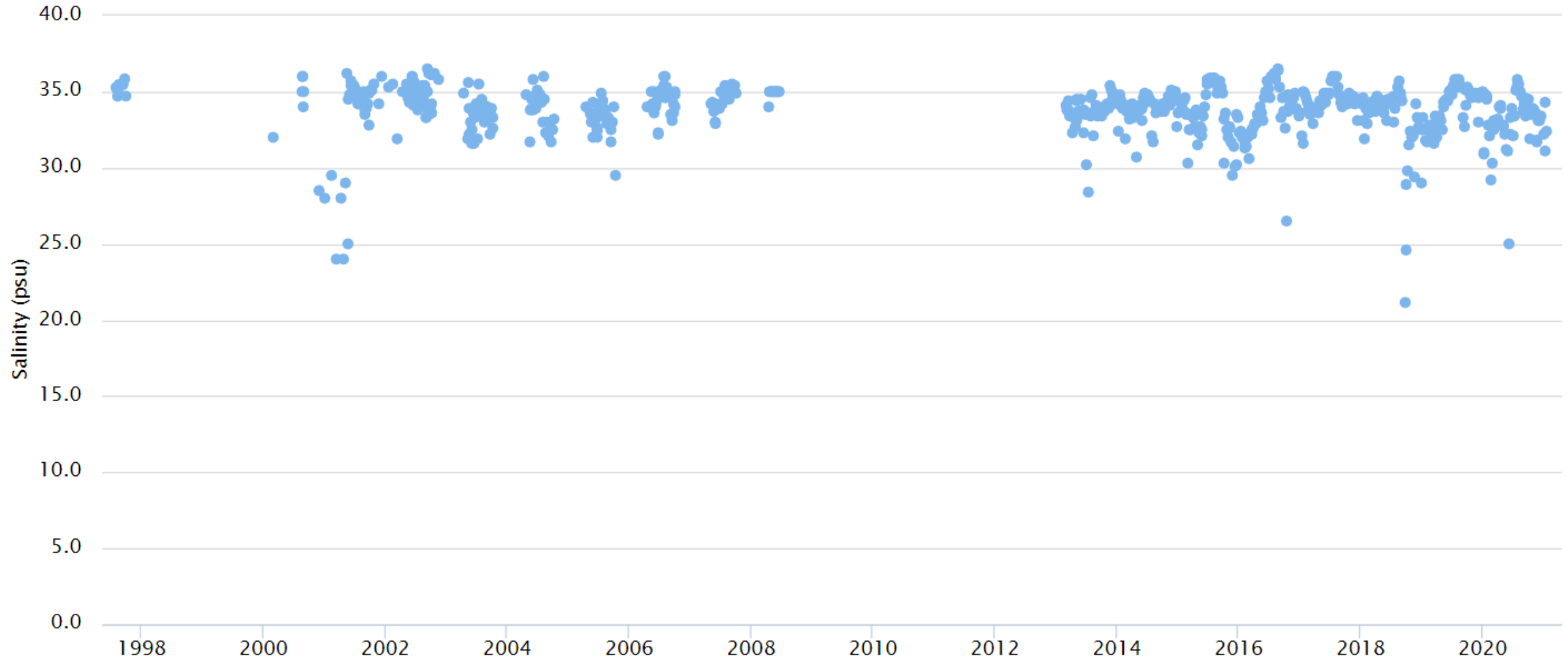
Data collected between May 08, 1997 and Jan 25, 2021



Salinity (psu)



Data collected between May 08, 1997 and Jan 25, 2021



- WAC-01
- ◆ WAC-02
- WAC-03
- ▲ WAC-04
- ▼ WAC-05
- WAC-05A
- ◆ WAC-06
- WAC-07
- ▲ WAC-08
- ▼ WAC-09