

9-27-1999

On Campus, September 27, 1999

Coastal Carolina University

Follow this and additional works at: <https://digitalcommons.coastal.edu/on-campus>



Part of the [Higher Education Commons](#), and the [History Commons](#)

Recommended Citation

Coastal Carolina University, "On Campus, September 27, 1999" (1999). *On Campus Newsletter*. 150.
<https://digitalcommons.coastal.edu/on-campus/150>

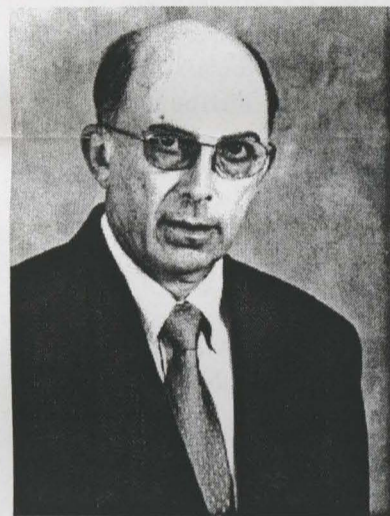
This Periodical is brought to you for free and open access by the CCU Newsletters at CCU Digital Commons. It has been accepted for inclusion in On Campus Newsletter by an authorized administrator of CCU Digital Commons. For more information, please contact commons@coastal.edu.

on Campus

A Newsletter for Faculty and Staff of Coastal Carolina University Volume 9, Number 15 • September 27, 1999

Coastal professor Richard Dame gives public lecture about South Carolina's estuaries

Richard Dame, professor of marine science, will give a public lecture as part of Coastal's Distinguished Teacher-Scholar Lecturer Series on Thursday, Sept. 30, 1999 at 7:30 p.m. in the Wall Auditorium.



Richard Dame

The lecture, "From the Forest to the Sea, South Carolina's Productive Estuaries," is free and open to the public.

Dame is the fourth recipient of the Distinguished Teacher-

Scholar Lecturer award, sponsored annually by Horry Telephone Cooperative. The award is given to a faculty member who has outstanding abilities as a teacher, scholar and communicator. The recipient of the honor

delivers a lecture during the fall semester on an original topic drawn from his or her area of expertise.

Dame's lecture will focus on the South Carolina's estuaries, the reasons why they are so rich in fish and living creatures and the services they provide to humankind.

A native of Charleston, S.C., Dame joined the Coastal faculty in 1971 and founded Coastal's marine science program. Named South Carolina's first Palmetto Professor in 1991, Dame is internationally recognized for his research on oysters. He served as program director in charge of ecosystem research at the National Science Foundation from 1992 to 1994, and as president of the Southeastern Estuarine Research Society from 1995 to 1998. Dame earned a bachelor's degree in biology from the College of Charleston, a master's degree in zoology and ecology from the University of North Carolina, and a Ph.D. in biology and marine studies from the University of South Carolina. He has published three books and more than 75 papers in scientific journals.

Creative retirement expert to speak at Coastal

Ronald Manheimer, executive director of the North Carolina Center for Creative Retirement at UNC Asheville, will give a talk about how older adults can transform their lives and their communities through education Friday, Oct. 8 at 1:30 p.m. in the Wall Auditorium. The lecture, titled "If All Experience is an Arch: The Transformative Power of Lifelong Learning," is free and open to the public.

Trained in philosophy, Manheimer has developed education programs for retirement-aged people in colleges, universities, libraries, senior centers and retirement communities. He has published many books and articles which investigate issues relating to later life and human development, including *A Map to the End of Time: Wayfarings with Friends and Philosophers*, published earlier this year.

Manheimer was recently elected a fellow of the University of North Carolina Institute on Aging in Chapel Hill. He also has served as director of older adult education for the National Council on the Aging (NCOA) in Washington, D.C.

Manheimer earned a Ph.D. from the University of California, Santa Cruz. His other books include *The Second Middle Age: Looking Differently at Life Beyond 50* and *Older Americans Almanac: A Reference Work on Seniors in the United States*. Manheimer will sign copies of his books following the lecture.

For more information, contact the Division of Extended Learning and Public Services, sponsor of the event, at extension 2665.

Classical comedy opens Coastal Theater season

The Misanthrope, the celebrated comedy of manners by the French playwright Moliere, will open the 1999-2000 Coastal Theater season. Performances are scheduled for Friday, Oct. 1 and Saturday, Oct. 2 at 7:30 p.m. and Sunday, Oct. 3 at 3 p.m. in the newly renovated Wheelwright Auditorium. Tickets are \$10; \$5 for students under 18.

"Moliere's commentary on the hypocrisy of social behavior is as stinging today as it was in the 1600s when the play was written," said Sandi Shackelford, director of the production and associate professor of theater at Coastal, "which proves that society hasn't changed all that much in 400 years."

To suggest this quality of timelessness in dramatic terms, Shackelford's *Misanthrope* mixes 17th century and modern costumes, decor and mannerisms, often in a whimsical way. Presented in poet Richard Wilbur's modern verse translation of the play, the production features a cast of 11, all Coastal students or alumni.

Daniel Ennis, assistant professor of English at Coastal, will present a special seminar, "Moliere for Dummies," on Thursday, Sept. 30

at 4 p.m. in the Little Theater, ADM 005. The seminar is free and open to the public; refreshments will be served.

For more information, contact the Wheelwright Box Office at extension 2502.

Coastal Carolina University
Theater Production

Moliere's
The Misanthrope

Friday	October 1, 7:30 p.m.
Saturday	October 2, 7:30 p.m.
Sunday	October 3, 3 p.m.

Wheelwright Auditorium

For more information contact
Wheelwright Auditorium at
extension 2502.

ODK application deadline approaches

Letters of invitation and application forms have been sent to more than 600 juniors and seniors who are academically eligible for election to Omicron Delta Kappa.

Election to ODK is an indication of undergraduate achievement. To be eligible, a student must be a junior or senior, rank in the top 30 percent of class, and have held at least one leadership position.

Students who have not received a mailing and who consider themselves eligible should immediately contact the Office of the Vice President for Student Affairs at extension 2300.

Students who have received a mailing are encouraged to complete the form and return it by the Friday, October 15, deadline.

Do You Know?

More than 420 people have signed up to become Lifelong Learning Society members for the 1999 fall semester – an increase of more than 100 people over fall 1998. Lifelong Learning Society classes began Sept. 13.

Source: Division of Extended Learning and Public Services

Coastal Carolina People

Faculty and staff are encouraged to submit information to be included in the "Coastal Carolina People" section of *On Campus*. Information will be published following the presentation or activity.

- Olcay Akman had an article, "A Study of Log-Logistic Model in survival Analysis," published in the *Biometrical Journal*. Akman also presented "Modified EM Algorithm in Determining Length-Biasedness of Lifetime Distributors" at the 52nd meeting of the International Statistical Institute held Aug. 14-24 in Helsinki, Finland.
- Dennis Wiseman has been appointed by Gov. Jim Hodges to serve on the Governor's newly-formed Middle School Task Force. The task force is chaired by Senator Nikki Setzler

with Representative Ronnie Townsend serving as co-chair. The Governor has charged the task force to make recommendations to him that address the enhancing of pre-service and continuing preparation of teachers, strengthening the cadre of the state's middle school principals, increasing academic achievement, school organization, engaging families and the reduction of risk-taking behaviors of middle school students. Dean Wiseman is the only dean of education appointed to serve on the task force.

The Women's Advocacy Center Initiates Brown Bag Lunch Series "What Do Women Want?"

The Women's Advocacy Center has developed a new program called "Women and Leadership Brown Bag Lunch Series: What Do Women Want?" The purpose of this series is to bring students, faculty and staff together informally on a regular basis to discuss what makes women leaders; how we can best support women in leadership roles, both on and off campus; how we can encourage and support leadership in young women; and how Coastal can better respond to the needs, issues and critical dilemmas facing women on this campus. The program is open to women of the Coastal community, and to men who care about women. Bring your own lunch. Ice, cups, soft drinks and iced tea will be provided. Come with questions. Come with answers. Come with friends.

Times, days and locations vary, so please check the schedule below for this information. If you have an idea for a future Brown Bag Lunch topic pertaining to women and leadership, or if you would like to facilitate a luncheon topic in Spring 2000, call Stacy Cretzmeyer of the Women's Advocacy Center at extension 2900.

- **Better Health Care for Women**
Facilitators: Joan Piroch and Linda Palm
Wednesday, Sept. 29
12:30 to 1:30 p.m.
Singleton Building Conference Room
- **Mentoring Women Students**
Facilitators: Judy Colson and Amy Bieszke
Monday, Oct. 4
12:30 to 1:30 p.m.
Admissions 003

- **Pay Equity for Women**
Facilitator: Mary Crowe
Tuesday, Oct. 12
Noon to 1 p.m.
Admissions 003
- **Advancements for Women in Higher Education**
Facilitator: Charmaine Tomczyk
Friday, Oct. 22
Noon to 1 p.m.
Admissions 003
- **Care of the Woman's Soul**
Facilitator: Sally Hare
Tuesday, Oct. 26
12:30 to 1:30 p.m.
Admissions 003
- **Women in Science: Issues in Career Planning**
Facilitator: Susan Libes
Wednesday, Nov. 10
12:30 to 1:30 p.m.
Singleton Building Conference Room
- **A Leadership Opportunity for Women in South Carolina**
Facilitator: Danielle Eiler
Monday, Nov. 15
12:30 to 1:30 p.m.
Admissions 003;

Cerny to lead seminar on time management

Ed Cerny, author and entrepreneur, will lead a three-hour course called "Time Management: Having the Time of Your Life" Wednesday, Oct. 6 from 9 a.m. to noon at Webster University. The fee for the course is \$45.

"We all have the same amount of time," says Cerny, "we just use it differently." The course is designed to help participants develop methods of using time more efficiently. Examine how habits define our lives, lifelines vs. deadlines, the tyranny of the urgent, setting and accomplishing goals.

All participants will receive a free day timer and the first 15 registrants will receive a free copy of one of Cerny's two books, *Notes from the Coach* and *Learn to Market Yourself: a Christian Perspective*.

The course is sponsored by Coastal's Division of Extended Learning and Public Services. For more information or to register, call extension 2554 or visit the Web site at www.coastal.edu/learn.

Coastal offers online business and management courses

Coastal's Division of Extended Learning and Public Services is now taking reservations for online classes on a variety of topics relating to business management. The self-paced noncredit classes are ideal for those who need to upgrade their job skills but find it inconvenient or impossible to participate in a traditional classroom setting. The next series of classes begins Oct. 13. Each course lasts six weeks and includes 12 lessons. Lessons are posted on the Web every Wednesday and Friday and are supplemented by interactive quizzes, assignments and online discussion areas.

One of the primary advantages of online classes is flexibility, according to Peter Balsamo, dean of Coastal's Division of Extended Learning and Public Services. "With online courses you can 'attend class' anytime you want - before breakfast, during lunch, late at night, whenever it's convenient," said Balsamo. "Simply log into your computer when you are ready to read your lecture notes and complete your assignments. All you need is access to an Internet Web browser and Microsoft Windows."

A certificate of completion will be issued upon request and verification of all completed coursework.

Courses are available on the following subjects:

- **Basic Supervision Certificate Program**
Includes courses on communication, motivation, conflict resolution and problem solving; Fee: \$85
- **Certificate in Project Management Principles**
Includes courses on management techniques; fee: \$115
- **Customer Service Certificate Program:**
Includes courses on marketing and sales techniques; Fee: \$99
- **Year 2000 Preparedness Workshop**
Fee: \$105

For information call extension 2665 or visit the Web site: www.coastal.edu/learn.

Birthdays

September

27 Joseph Durant
James Farsolas
Stephanie Hyland
Season Renee Klein

October

2 Adrian Burgess
Shaun Docking
Bill Edmonds
Dan Lawless
Subhash Saxena
3 Peggy Bates
Craig Gilman
Nadine Godwin
Susan Slavik
5 Nils Rauhut
6 Pete Barr
Val Dunham
JoAnne Flanders
7 Wayne White
8 Sharon Thompson
9 Hal Ivey
Dick Singleton
10 Wanda Lewis
Mike McClellan
11 Tom Jones



COASTAL CAROLINA UNIVERSITY

Office of Marketing Communications
P. O. Box 261954 • Conway, SC 29528-6054

On Campus

September 27, 1999

Campus Calendar

October

On Campus

On Campus is published biweekly on Monday by the Office of Marketing Communications. Items to be included should be submitted to the Office of Marketing Communications in SNGL 204 by noon the Monday before publication, unless otherwise listed.

On Campus publication dates are as follows:

Publication date:	Submission deadline:
Monday, October 11	Monday, October 4
Monday, October 25	Monday, October 18
Monday, November 8	Monday, November 1
Monday, November 22	Monday, November 15
Monday, December 6	Monday, November 29

The next issue of *On Campus* will be published Monday, October 11; the deadline to submit information is Monday, October 4 at noon.

September

- M • 27**
 - **Men's Golf**
Bay Tree/CCU Intercollegiate, North Myrtle Beach, continues through Sept. 28
- W • 29**
 - **What Do Women Want? Brown Bag Lunch Series: "Better Health Care for Women" presented by Joan Piroch and Linda Palm**
12:30 to 1:30 p.m., SNGL Conference Room Stacy Cretzmeyer/Women's Advocacy Center
 - **Intermediate Word-Mail Merge Workshop**
2 to 4 p.m., Society House. Carol Lane
 - **Volleyball**
Coastal at Campbell, 7 p.m.
- Th • 30**
 - **Distinguished Teacher-Scholar Lecture "From the Forest to the Sea, South Carolina's Productive Estuaries" presented by Richard Dame**
7:30 p.m., Wall Auditorium. Chris Martin

- F • 1**
 - **Intro to PowerPoint Presentations Workshop**
2 to 4 p.m., Society House. Carol Lane
 - **The Misanthrope by Moliere**
Coastal Carolina Theater performance
7:30 p.m., Wheelwright Auditorium
Wheelwright Box Office
- Sa • 2**
 - **Volleyball**
Coastal at Liberty, 2 p.m.
 - **Soccer**
Winthrop at Coastal, 7 p.m.
 - **Men's Cross Country**
Coastal at The Citadel Invitational
 - **Women's Cross Country**
Coastal at Iona Invitational, New York
 - **The Misanthrope by Moliere**
Coastal Carolina Theater performance
7:30 p.m., Wheelwright Auditorium
Wheelwright Box Office
- Su • 3**
 - **Volleyball**
Coastal at Radford, 2 p.m.
 - **The Misanthrope by Moliere**
Coastal Carolina Theater performance
3 p.m., Wheelwright Auditorium
Wheelwright Box Office
 - **Catholic Campus Ministry Association, Catholic Mass**
7:30 p.m., ADM 005
Tim McCormick/Newman Club
- M • 4**
 - **What Do Women Want? Brown Bag Lunch Series, "Mentoring Women Students" presented by Judy Colson and Amy Bieszke**
12:30 to 1:30 p.m., ADM 003
Stacy Cretzmeyer/Women's Advocacy Center
 - **Men's Golf**
Coastal at UTC Fall Intercollegiate, Chattanooga, Tenn., continues through Oct. 5
- W • 6**
 - **Soccer**
Campbell at Coastal, 7 p.m.
 - **Last day of classes for Fall I**
- F • 8**
 - **Volleyball**
Winthrop at Coastal, 2 p.m.
- Sa • 9**
 - **Volleyball**
Coastal at UNC Asheville, 2 p.m.
 - **Soccer**
Elon at Coastal, 7 p.m.
 - **Men's Cross Country**
Coastal at Furman Invitational
 - **Women's Cross Country**
Coastal at Penn State National Invitational
- Su • 10**
 - **Catholic Campus Ministry Association, Catholic Mass**
7:30 p.m., ADM 005.
Tim McCormick/Newman Club
- M • 11**
 - **Women's Golf**
Coastal at Cougar Fall Invitational, Mt. Pleasant, continues through Oct. 12

Campus Dining

The CINO Grille, located in the Student Center, is open Monday through Thursday from 7 a.m. to 10 p.m.; Friday from 7 a.m. to 7 p.m.; and Saturday and Sunday from 3 to 8 p.m. Selections are available from the Grille, the Deli or Pizza Hut menu items.

The Café, featuring an all-you-can-eat menu, is located adjacent to Residence Hall M. Meal costs and the hours of operation are as follows:

Monday through Friday

Breakfast: \$3.50; served from 7 to 9:30 a.m.
Continental Breakfast: 9:30 to 10 a.m.
Lunch: \$4.50; served from 11 a.m. to 2 p.m.
Dinner: \$5; served from 5 to 7:30 p.m.

Saturday and Sunday

Brunch Buffet: \$5.50; served from 10:30 a.m. to 1:30 p.m.
Dinner: \$5; served from 4:30 to 6:30 p.m.

For more information, call Denise Elliot at extension 2365.

The Café Lunch Menu

Week of September 27

Mon: Sloppy Joes; Pork Fried Rice; Grilled Cheese
Tues: Barbecue Meatballs; Lemon Chicken; Black Bean Burger
Wed: Hot Wings; Shrimp Stir Fry; Tofu Stir Fry
Thurs: Hot Dogs; Ham and Cheese Casserole; Vegetable Stir Fry
Fri: Tacos; Pizza Subs; Garden Burger

Week of October 4

Mon: Corn Dogs; Spaghetti Carbonara; Rice Stuffed Peppers
Tues: Herbed Chicken Pasta; Lasagna; Vegetable Pot Pie
Wed: Chicken Stir Fry; Steak and Cheese; Stir Fry Vegetables
Thurs: Ham and Cheese Casserole; Fried Chicken; Vegetable Philly Sandwich
Fri: Crab Linguine; Grilled Chicken; Veggie Pizza

Note: Menus are subject to change due to product availability.