

10-6-1997

On Campus, October 6, 1997

Coastal Carolina University

Follow this and additional works at: <https://digitalcommons.coastal.edu/on-campus>



Part of the [Higher Education Commons](#), and the [History Commons](#)

Recommended Citation

Coastal Carolina University, "On Campus, October 6, 1997" (1997). *On Campus Newsletter*. 110.
<https://digitalcommons.coastal.edu/on-campus/110>

This Periodical is brought to you for free and open access by the CCU Newsletters at CCU Digital Commons. It has been accepted for inclusion in On Campus Newsletter by an authorized administrator of CCU Digital Commons. For more information, please contact commons@coastal.edu.

On Campus

A Newsletter for Faculty and Staff of Coastal Carolina University • Volume 6, Number 17 • October 6, 1997

Analysis of student surveys on salmonella outbreak continues

Officials from DHEC and the Centers for Disease Control (CDC) are analyzing data gathered last week in residence hall surveys concerning the recent salmonella outbreak on campus. They hope that the questionnaires, which asked students to record what they

ate between Sept. 15 to 19, will help them determine the cause of the outbreak. Eighty-five students reported symptoms of the illness, and 14 cases of salmonella were confirmed. ♦

DHEC grant funds beach profile study

Douglas Nelson, professor of geology and marine science, has been awarded a \$9,030 grant from DHEC through the U.S. Geological Survey for an ongoing beach profile study along the Grand Strand. The grant is for the period from September 1997 to June 1998.

Since 1986, Nelson has directed this study, which surveys the position of the beach and dunes between Little River to Murrells Inlet. Twice a year Nelson and a group of approximately 25 marine science students take a variety of measurements every 2,000 feet along the coast extending out to depths at least five feet below sea level.

NASA grant will fund marine science analysis technology

Eric Koepfler, associate professor of marine science, has been awarded a \$4,000 faculty research enhancement grant from NASA through the South Carolina Space Grant Consortium to develop new remote sensing and image analysis curricula which will be integrated into selected marine science courses.

According to Koepfler, this new curricula will add a new dimension to at least four marine science courses by introducing new visual techniques based on data gathered through satellite and aircraft technologies. "Remote sensing and image analysis will enhance both the lecture and the laboratory components of several essential marine science courses," said Koepfler. "Computer-generated color representations made

"The data we gather is useful in determining the rate and the pattern of beach erosion," said Nelson. "We turn the information over to the Office of Coastal Resource Management, the organization responsible for regulating development along the state's coast."

The research made possible through this grant will play a significant role in establishing new setback lines along the state's coast, which OCRM is scheduled to do next year, according to Nelson.

Nelson joined the Coastal faculty in 1973. He earned a Ph.D. in geology from the University of South Carolina in 1973 and a bachelor's degree in geology from the University of Minnesota in 1968. ♦

possible by this technology will provide new ways for students to study a variety of phenomena, including sea level changes, coastal wetland and salt marsh environments, and chlorophyll concentrations in the Atlantic Ocean. These new methods of analysis will improve students' problem-solving skills and help to increase their understanding of issues that are vitally important to human society."

Koepfler joined the Coastal faculty in 1990. He earned a Ph.D. in marine science from the College of William and Mary in 1989; and bachelor's degrees in biology and chemistry from the University of Toledo in 1981. ♦

Coastal hosts Graduate School and Career Information Fair

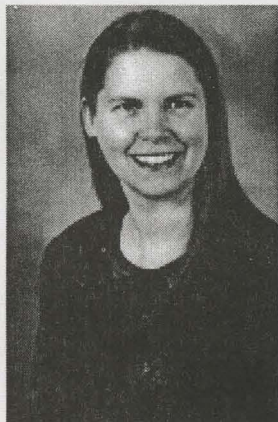
Coastal will host a Graduate School and Career Information Fair on Wednesday, Oct. 15, from 9:30 a.m. to 1:30 p.m. in the lobby of the Wall Building. Students and alumni are encouraged to attend. The event is free.

"Students and alumni who are exploring career options, searching for employment on internships or are planning to go to graduate school can gather valuable information at the Graduate School and Career Information Fair," said Mollie Fout, coordinator of Career Management Services. "Representatives from

graduate schools at the University of South Carolina, Winthrop University, Webster University, College of Charleston and Wake Forest University will attend the event, and businesses from across South Carolina will be represented at the fair. Some of the participating employers will accept resumes at the fair and some will return to Coastal for active recruiting at a later date."

For more information, contact Mollie Fout at the Office of Student Employment and Career Management Services at extension 2333. ♦

Distinguished Teacher-Scholar Lecturer selected for 1997



Sara Sanders, associate professor of English, will speak in Coastal's Distinguished Teacher-Scholar Lecturer Series on Thursday, Oct. 16 at 7:30 p.m. in the Wall Auditorium. The lecture, "The Story Way of Knowing in the Context of Community," is free and open to the public.

Sanders is the second recipient of the Distinguished Teacher-Scholar Lecturer award, sponsored by Horry Telephone Cooperative. The award is given annually to a faculty member who has outstanding abilities as a teacher, scholar and communicator. "The purpose of this award is to recognize individuals who embody the university's teacher-scholar ideal, which is to search for and transmit knowledge through critical inquiry and teaching," said John Idoux, provost and vice-president for academic affairs.

The recipient of this annual award delivers a lecture in the fall semester on an original topic drawn from his or her area of scholarly expertise. The award recipient is chosen by a committee which is comprised

of faculty, a student representative and a member of the university's support staff.

Sanders joined the Coastal faculty in 1987. She is a graduate of Baptist College of Charleston (now Charleston Southern University) and has a master's degree and a Ph.D. in linguistics, both from the University of South Carolina. She was the director of Coastal's Honors Program from 1992 to 1996 and received the Student Affairs Division Award for 1995-1996. Sanders is also a consultant to the Mercy Hospice Illness Narratives Research Team and is a member of the board for Coastal's Center for Women's Advocacy. ♦

Country music's Chuck Pyle to perform

Country music singer-songwriter Chuck Pyle, known for his Zen-cowboy wit, will perform a concert in Wheelwright Auditorium on Monday, Oct. 13 at 7:30 p.m. Tickets are \$12, \$5 for students.

A virtuoso guitarist, Pyle has appeared on the weekly PBS show *Austin City Limits* and his songs have been recorded by Suzy Boggus, John Denver, the Nitty Gritty Dirt Band and other artists. Pyle's song "The Other Side of the Hill" is featured on Chris LeDoux's *Greatest Hits* CD.

As a songwriter and storyteller, Pyle has carved a unique niche in today's country music scene. Acclaimed for his western rural intellect, Pyle's comic style combines the sagebrush humor of Will Rogers with Zen and New Age philosophy. He was voted Best Solo Performer of 1996 by Front Range Public Radio in Colorado. Pyle is now recording his fifth album, scheduled to be released in December 1997, which will feature several members of Jackson Browne's band.

For more information, contact the Wheelwright Box Office weekdays between noon and 5 p.m. at extension 2502. ♦

Hispanic CELEBRATION

Coastal will host a Hispanic Celebration on Wednesday, Oct. 15 from 11:30 a.m. to 2 p.m. in Spadoni Park. The event is free and open to the public.

The purpose of the event is to create awareness among college students, faculty, staff and the community about Hispanic cultures represented on the campus.

The Hispanic Celebration will feature food and music from the countries of Central, Latin and South America. Maps, posters and other information will be displayed. In case of inclement weather, the event will be held in the Student Center.

Hispanic Celebration is sponsored by Leadership Challenge, a leadership development program for minority students. For more information contact Pat Singleton-Young at extension 2304. ♦

Nominations are open

Sixty students will be chosen nationwide (and U.S. territories) to be featured in a two-page color package in *USA Today* newspaper. Twenty members of the first team will receive \$2,500 cash prizes.

The deadline for receipt of nominations is Saturday, November 29, 1997. Please encourage your faculty and staff to submit qualified nominations from your school or the general student body.

For more information, contact Charmaine Tomczyk at extension 2403. ♦



COASTAL CAROLINA
UNIVERSITY

Did you know?

The Lady Chanticleers Cross Country team is ranked 22nd in the NCAA Division I Women's Cross Country poll released Sept. 22. This is the highest rank any Coastal athletic team has received.

Shakespeare's *Macbeth* gets futuristic twist

Shakespeare's powerful tragedy *Macbeth* will be given a futuristic twist in the University Theater production scheduled for Friday, Oct. 10 and Saturday, Oct. 11 at 7:30 p.m., and Sunday, Oct. 12 at 3 p.m. in Wheelwright Auditorium. Admission is \$8, \$5 for students.

Directed by David Millard and Robin Edwards Russell the play is set in a landscape devastated by a global catastrophe. The tribal civilization which emerges from the rubble provides the cast of characters for Shakespeare's famous tale of fatal prophecies, blind ambition, and murder. All cast members are Coastal students.

Incidental music for this production was composed by Reginald Bain, associate professor of music theory and composition at the University of South Carolina. In keeping with the play's post-contemporary setting, Bain's music for *Macbeth* is electronic and computer-generated. Bain is the recipient of an A.S.C.A.P. Young Composer Award for his computer music and is the author of several computer-assisted music instruction programs which are used in universities across the United States and Europe.

The fight scenes in the play are directed by Jamie Cheatham, who has designed fencing and fight scenes in more than 20 professional productions, including *Measure for Measure*, starring Kevin Kline, for the New York Shakespeare Festival as well as productions of the Julliard School, the Riverside Shakespeare Company, and Columbia University.

James Gross, assistant professor of theater, designed the sets.

The production has been entered in the Kennedy Center American College Theater Festival, a national competition involving more than 900 college productions and 18,000 students.

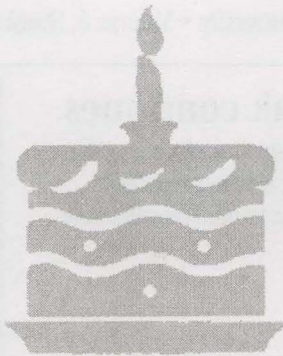
For more information, contact the Wheelwright Box Office weekdays from noon to 5 p.m. at extension 2502. ♦

Recreation students assists in Special Olympics Shoot-Out

For the first time, students in Recreation 482, under the guidance of Alan J. Case and Robin Anastasi, Regional Director, South Carolina Special Olympics will plan and conduct the Special Olympics Soccer Shoot-Out

on Saturday, October 11 from noon to 3 p.m.. The event will be held on the IM athletic field (across from the Printing/Mail Services building) Eighty to 100 Special Olympics athletes and their coaches are expected. ♦

Birthdays



6	Pete Barr	12	Patty Dudley
	Val Dunham		Victor Jones
	Joanne Flanders	13	Mollie Bethea-Floyd
7	Wayne White		Stan Godshall
8	Sandra King	14	Suzanne Beverly
	Sharon Thompson	15	Treelee MacAnn
9	Hal Ivey		Kristi Steinbrecher
	Dick Singleton	16	Jim Mee
10	Wanda Lewis	17	Susan Lawing
	Mike McClellan		Betty Lou Maute
11	Tom Jones	19	Margaret Bostic
		20	Kathie Schlick

Be a Player or a Spectator! Softball Game

Alumni vs. Faculty/Staff

.....
Coastal Carolina University Softball Field

Wednesday, October 15, 1997 5:30 p.m.



- *Players must provide gloves*
 - *Refreshments and beverages available*
 - *For more information or to RSVP, extension 2007.*
- The game will be cancelled in case of inclement weather.*

Menus

The CINO Grille, located in the Student Center, is open Monday through Thursday from 7 a.m. to 11 p.m.; Friday from 7 a.m. to 7 p.m.; and Saturday and Sunday from 3 to 8 p.m. Selections are available from the Grille, the Deli or Pizza Hut menu items.

The Cafe, featuring an all-you-can-eat menu, is located adjacent to the new residence hall. Meal costs and the hours of operation are as follows: **Monday through Friday:**

- Breakfast: \$3.50; 7 to 9:30 a.m.
- Lunch: \$4.50; 11 a.m. to 2 p.m.
- Dinner: \$5; 5 to 7:30 p.m.

Saturday and Sunday

- Brunch Buffet: \$5.50; served from 10:30 a.m. to 1:30 p.m.
- Dinner: \$5; served from 4:30 to 6:30 p.m.

For more information, contact Evan Klingman at extension 2365.

The Cafe

Lunch menu week of October 6

Monday: Spaghetti with Meat Sauce; Chicken Pot Pie; Barbecue Chicken Breast Sandwich
Tuesday: Chili Macaroni; Chicken or Beef Kabobs; Chicken and Broccoli Casserole; Steak-Ums; Marinated Chicken Breasts
Wednesday: Meatball Subs; Baked Chicken; Beef Tips with Mushrooms over Egg Noodles
Thursday: Carved Ham; Fried Chicken Rib Sandwich; Marinated Chicken Breasts
Friday: Cajun Baked Fish; Pizza; Hot Wings

Lunch menu week of October 13

Monday: Roast Pork; Beef Stew; Turkey Divine
Tuesday: Chicken Parmesan; Barbecue Pork Sandwich; Beef and Broccoli Stir Fry; Marinated Chicken Breasts

Wednesday: Meatloaf; Fried Chicken; Reuben sandwich
Thursday: Carved Beef; Spaghetti with Marinara Sauce; Chicken Nuggets; Marinated Chicken Breasts
Friday: Pot Roast; Italian Sausage with Peppers and Onions; Clam Strips

The CINO Grille

Week of October 6

Monday: Sweet and Sour Chicken; Linguine with Marinara Sauce; Szechuan Chicken with Broccoli and Noodles
Tuesday: Beef Caesar; Bowtie Pasta with Alfredo Sauce; Chicken Stir Fry
Wednesday: Glazed Chicken; Spaghetti with Meat Sauce; Turkey Meatloaf
Thursday: Stuffed Red Peppers; Fettucini with Tomato Basil Sauce; Chicken Breast with Mushrooms
Friday: Cheese Lasagna; Zita with Italian Sausage; Beef Stew over Rice

Week of October 13

Monday: Sweet and Sour Chicken; Linguine with Marinara Sauce; Light and Crispy Pecan Chicken
Tuesday: Beef Caesar; Bowtie Pasta with Alfredo Sauce; Chicken Polynesian
Wednesday: Glazed Chicken; Spaghetti with Meat Sauce; Turkey Pot Pie
Thursday: Stuffed Red Peppers; Fettucini with Tomato Basil Sauce; Chicken Pot Pie
Friday: Cheese Lasagna; Italian Sausage over Zita Pasta; Chicken and Broccoli Casserole

Note: All menus are subject to change due to product availability.

Sculpture exhibit

An exhibit of sculpture by Linda Williams McCune, an award-winning South Carolina artist, will be on display at the gallery in the Admissions Building from Tuesday, Oct. 7 to Friday, Oct. 31.

An opening reception for the exhibit will be held Tuesday, Oct. 7 from 2 to 4 p.m. in the art gallery. The exhibit, the lecture and the reception are free and open to the public. The gallery is open weekdays from 8:30 a.m. to 5 p.m.

The exhibit includes a variety of sculptural works which McCune titles "Sculptural Obsessions." Works in the series honor the artist's family members and "serve as a repository for personal experience," according to McCune. "Community traditions and a rural background play a crucial role in my decision to focus upon a special Southern geography," she said. "This environment gave me self-will, a sense of place, a legacy . . . and a wealth of allegorical, metaphorical and symbolic material." Although they reflect a local environment, McCune's works transcend the limitations of regional art. "I wish to create a well-understood emotional language rather than one solely concerned with Southern narrative tradition or rural technologies."

McCune earned a master's degree in fine art from the University of South Carolina in 1982. Her work has been exhibited in more than 80 group and one-person shows throughout the Southeast and in New York and Arizona. McCune is professor of art at Greenville Technical College, and she has published several books, articles and critical reviews on art. She also designs sets for theatrical productions and industrial shows. McCune lives in Greer, S.C.

For more information about the exhibit, contact Cheryl Green, gallery coordinator, at extension 2750. ♦

On Campus

On Campus is published biweekly on Monday by the Office of Public Information. Items to be included should be submitted to the Office of Public Information in SNGL 204 by noon the Tuesday before publication, unless otherwise listed.

On Campus publication dates during the fall semester are as follows:

Publication date:
 Monday, October 20
 Monday, November 3
 Monday, November 17
 Monday, December 1
 Friday, December 12

Deadline to submit information:
 Tuesday, October 14
 Tuesday, October 28
 Tuesday, November 11
 Monday, November 24
 Monday, December 8



**COASTAL CAROLINA
UNIVERSITY**

October 6, 1997
Dr. Campbell

Office of Public Information
P. O. Box 261954 • Conway, SC 29528-6054

COASTAL CAROLINA UNIVERSITY



Campus Calendar

OCTOBER

6

British Monarchy After Diana
presented by Richard Collin, Lunch and Learn Seminar
noon, ADM 003; preregistration required
Judy Fontana
Outdoor Movie
Coastal Production Board event
7:30 p.m., Intramural Field
Porter Medley/Debbie Conner

7

Sculptural Obsessions, Linda McCunne Art Exhibition
The Gallery, Artist on Tour series
Reception-2 to 4 p.m., The Gallery, ADM; Exhibit continues
through Friday, October 31
Cheryl Green

8

Periodical Index Search Workshop
9 to 10 a.m., WALL 109
Carol Lane/Kay Alford
Coastal Educational Foundation Donor Dinner
6:30 p.m., The Dunes Golf and Beach Club, Myrtle Beach, by invitation. Sue Colvard
Last day of classes for Fall I
Midpoint in Regular Fall semester
Grade of "WF" will be assigned for drops or withdrawals
for Regular Fall; continues through Dec. 5

9

Final exams for Fall I; continues through Oct. 13

10

Macbeth
Coastal Carolina Theater performance: 7:30 p.m.
WA. Wheelwright Box Office
Macbeth Reception
for cast members and their parents following opening performance. Wheelwright Box Office

11

Volleyball
Coastal at Liberty, 1 p.m.
Special Olympics Soccer Shoot-out
noon to 3 p.m., Intramural Athletics Field
Alan Case
Soccer
UMBC at Coastal, 7 p.m.
Macbeth
Coastal Carolina Theater performance: 7:30 p.m.
WA. Wheelwright Box Office

12

Volleyball
Coastal at Radford, 2 p.m.

Macbeth

University Theater performance: 3 p.m.
WA. Wheelwright Box Office

13

Country singer Chuck Pyle
performance, 7:30 p.m., WA. Wheelwright Box Office
Men's Golf
UTC Fall Invitational Tournament, Chattanooga, Tenn.;
continues on Oct. 14

14

Men's Golf
UTC Fall Invitational Tournament, Chattanooga, Tenn.

15

Graduate School and Career Information Fair
9:30 a.m. to 1:30 p.m., WALL lobby
Mollie Fout
Hispanic Celebration, Leadership Challenge
11:30 a.m. to 2 p.m., Spadoni Park
Pat Singleton-Young
Singleton House Event
for members: 4:30 p.m., Singleton House
Joan Piroch

Family Weekend, Alumni vs. Faculty/Staff Softball Game

5:30 p.m., Softball Field
Mona Dukes
Soccer
Lander at Coastal, 7 p.m.

16

Creating Web Pages Workshop
9 to 10 a.m., WALL 109
Carol Lane/Kay Alford
Bachelor of Arts in Interdisciplinary Studies (B.A.I.S.)
A Degree Program for Motivated Adult Learners Information Session
6:15 p.m., WALL 119
Peter Balsamo
Distinguished Teacher-Scholar Lecturer Presentation
Sara L. Sanders Lecture: 7:30 p.m., WALL Auditorium

17

Board of Trustees meeting
9 a.m., Wall Board Room
Chyrel Stalvey
Family Weekend, Honors Luncheon
noon, SC 208; by invitation
Sue Colvard
Family Weekend, Parents' College
2 to 2:30 p.m. - *DNA Cloning and Your Future* presented by Val Dunham,
WALL 317; *Challenges Facing the Workers of the 21st Century* presented by
Jim Eason, WALL 304; *Nutrition Myths* presented by Sharon Thompson,
WALL 318; *Through the Lens: The Arab-Israeli Conflict Today* presented
by Richard Collin, WALL 322
Sue Colvard
Family Weekend, Family Day at CINO Grille
3:15 to 4:15 p.m., SC.
Sue Colvard

Family Weekend, Parents Forum

4:30 p.m., WALL 317
Sue Colvard

Family Weekend, University Theater performance of Macbeth
7:30 p.m., WA
Sue Colvard

Last day of Regular Registration for Fall II

Fee payment is due the day of registration; course schedules will be
cancelled at 5 p.m. for non-payment of fees.

Women's Golf

Furman Lady Paladin Fall Invitational, Greenville, S.C.;
continues through Oct. 19

18

Family Weekend, Waites Island tours
8:30 a.m. to 12:30 p.m., Waites Island, reservations required
Sue Colvard

Family Weekend, Faculty coffee and danish

10:30 a.m. to noon, WALL Board Room
Sue Colvard

Family Weekend, Dutch-treat Lunch

12:30 to 2 p.m., The Cafe
Sue Colvard

Family Weekend, Student Leaders Reception

4 to 5 p.m., WA Blue Room
Sue Colvard

Family Weekend, Leadership Challenge Dinner

5:30 to 7 p.m., ADM 003; by invitation
Sue Colvard

Family Weekend, Cooperative Golf Management Reception

6 p.m., Dunes Golf and Beach Club, Myrtle Beach; by invitation
Sue Colvard

Family Weekend, University Theater performance of Macbeth

7:30 p.m., WA
Sue Colvard

Soccer

Coastal at Liberty, 7 p.m.

An Evening of Music, Coastal Production Board

8:30 p.m., Atheneum
Porter Medley/Debbie Conner

Women's Golf

Furman Lady Paladin Fall Invitational, Greenville, S.C.;
continues through Oct. 19

19

Family Weekend, Third Annual Family Weekend Golf Classic

11 a.m., Indigo Creek Golf Club, Surfside Beach, sponsored
by Gamma Phi Beta
Sue Colvard

Women's Golf

Furman Lady Paladin Fall Invitational, Greenville, S.C.

20

Classes begin for Fall II

Late registration, drop/add, or drop with no record for Fall II
continues through Oct. 23. Fee payment is due the day of registration;
course schedules will be cancelled daily at 5 p.m. for non-payment of fees.