

3-26-2001

CCU Newsletter, March 26, 2001

Coastal Carolina University

Follow this and additional works at: <https://digitalcommons.coastal.edu/ccu-newsletter>



Part of the [Higher Education Commons](#), and the [History Commons](#)

Recommended Citation

Coastal Carolina University, "CCU Newsletter, March 26, 2001" (2001). *Coastal Carolina University Newsletter*. 26.
<https://digitalcommons.coastal.edu/ccu-newsletter/26>

This Periodical is brought to you for free and open access by the CCU Newsletters at CCU Digital Commons. It has been accepted for inclusion in Coastal Carolina University Newsletter by an authorized administrator of CCU Digital Commons. For more information, please contact commons@coastal.edu.

Coastal Carolina

UNIVERSITY NEWSLETTER



March 26, 2001

A Newsletter for Faculty, Staff and Friends of Coastal Carolina University

Volume 11, Number 6

Coastal Today - new TV show launched

Coastal Today - An Inside Look at Coastal Carolina University is a new television show which is being launched by the Office of Marketing Communications. The half-hour show features all aspects of the university including interviews with students, faculty and staff; alumni profiles; programs offered by the Division of Extended Learning and Public Services; Chanticleer athletics and a Tip of the Week.

Coastal Today will be broadcast on local public and educational access channels. The show will air on HTC and Time Warner Cable Channel 12 daily at 10 a.m. and 7 p.m. Time Warner will air the show Sundays at 7:30 p.m. and Wednesdays at 4 p.m., on Channel 5 in Myrtle Beach, Conway and North Myrtle Beach and on Channel 17 in Surfside Beach, Garden City, Murrells Inlet, Georgetown and Andrews.

The host of *Coastal Today* is Robin Russell, a Coastal alumna and faculty member in the Department of Theater.

The show is produced on-campus by Coastal's Media Services.

Coastal Today takes the place of two other shows that were produced by the university, *Coastal Alive* and *The Coastal Tide*.

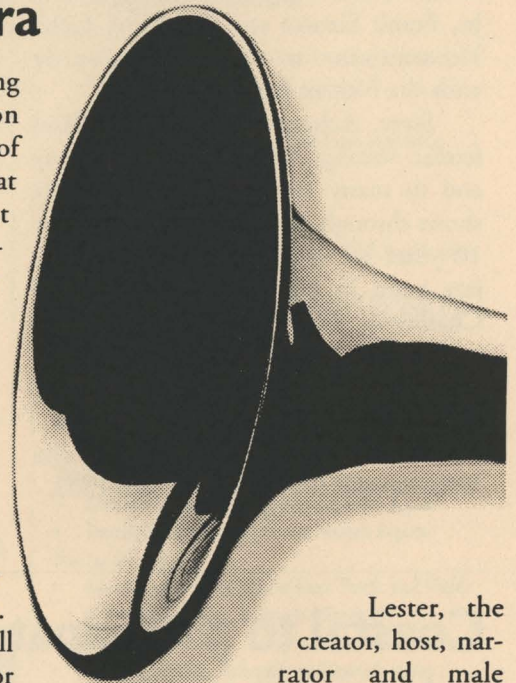
Coastal TODAY

Third Annual Wheelwright Gala salutes Big Band era

Coastal will present "When Swing Was King," a musical production acclaimed for its nostalgic evocation of the big band era, on Friday, April 6 at 7:30 p.m. in Wheelwright Auditorium. Admission to the performance is \$20; \$10 for students under age 18.

The event is part of Coastal's Wheelwright Gala, an annual event which raises funds for an endowment to benefit the university's cultural programming mission. Tickets to the black-tie gala, including dinner prepared by award-winning area chefs at 6 p.m. and reserved seating for the performance, are \$100 per person. The proceeds from this year's gala will be used to purchase Steinway pianos for Coastal's Department of Music.

The show features a 14-member swing ensemble led by Frankie Lester and Don Edwards, veteran performers who sang and played with the legendary big bands of the 1940s and 1950s. An extra dimension is provided by a large screen video presentation which flashes hundreds of photos from the heyday of swing music.



Lester, the creator, host, narrator and male vocalist of *When Swing Was King*, began his career with the Ted Lewis Orchestra in the 1940s and was chosen by Tommy Dorsey to replace Frank Sinatra as lead singer of Dorsey's famous band. During World War II, Lester toured the European Theater with Hal McIntyre and his Orchestra.

continued on page 2

CCU Newsletter Publication Dates

Coastal Carolina
UNIVERSITY NEWSLETTER

Submission deadlines:
Monday, April 2
Monday, April 16

Publication dates:
Monday, April 9
Monday, April 23

Coastal Carolina University Newsletter is published biweekly on Monday by the Office of Marketing Communications. Items to be included should be submitted to the Office of Marketing Communications in SNGL 204 by noon the Monday before publication, unless otherwise listed.

Deadline to submit information for the next issue is Monday, April 2 at noon.

Submissions for the CCU Newsletter should be submitted to Jerry Rashid (jrashid@coastal.edu) in the Office of Marketing Communications, Singleton 204.

Wheelwright Gala

...continued from page 1

He has also served as the leader of the Billy May and Eddie Howard orchestras.

Trumpeter Don Edwards, director of the When Swing Was King Orchestra, began his career in the military during World War II. Following the war, he traveled as lead trumpeter with the bands of Hal McIntyre, Billy May, Stan Kenton, Les Elgart and Ray Anthony. During a 15-year stint in Las Vegas, Edwards performed with such artists as Ella Fitzgerald, Sammy Davis Jr., Frank Sinatra and Nat King Cole. He continues to appear occasionally with the Nelson Riddle Orchestra.

Starr Acheson, the show's lead female vocalist, has sung on Broadway and in many touring musical comedy shows throughout the United States. For 10 years she performed with her own jazz band in Hilton Head Island and Charleston. She is highly regarded as an interpreter of Big Band standards made famous by Helen O'Connell, Doris Day, Helen Forest, Peggy Lee and others.

For more information, contact the Wheelwright Box Office at 349-2502.

One-woman play to be held April 7

Professional actress Kaiulani Lee will present her one-woman play "A Sense of Wonder," based on the life and work of famous naturalist Rachel Carson, on Saturday, April 7 at 7:30 p.m. at Coastal's Wall Auditorium. Admission to the event is \$10 for adults, \$5 for children under age 18. The event is free for Coastal students, faculty and staff.

The play dramatizes Carson's life amid the furor surrounding the publication of her landmark book *Silent Spring*, which alerted the general public to the dangers of chemical pesticides when it was published in 1962. During the course of the play, she battles the chemical industry, the government and the press in order to get her message to Congress and the American people.

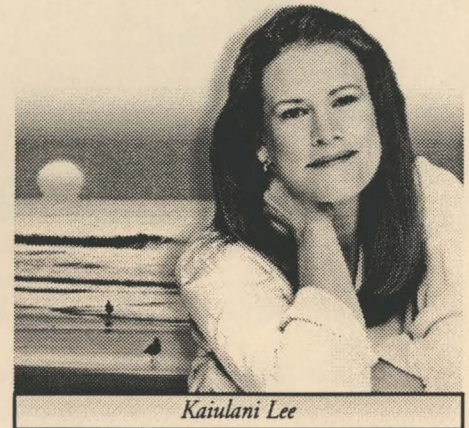
"A Sense of Wonder is the story of a woman's love for the natural world and her fight to protect it," says Lee, who wrote the play and portrays Carson. "She was an extremely private woman thrust into the role of a controversial public figure."

Carson was trained as a marine biologist and zoologist and has been called "the patron saint of the environmental movement." In addition to

Silent Spring, her other highly acclaimed books include *The Sea Around Us* and *The Edge of the Sea*.

Lee, who has more than 20 years experience as a stage, film and television actress, has starred in more than a dozen plays on and off-Broadway and won an OBIE award for her stage work. Her film credits include *The Seduction of Joe Tynan*, *The Fan*, *The World According to Garp*, *Cujo* and *Compromising Positions*. Lee has guest-starred in many television series including *Law & Order*, *The Equalizer*, *Tales from the Dark Side* and *The Waltons*.

For more information, contact the Wheelwright Box Office at 349-2502.



Kaiulani Lee

Coastal to participate in live worldwide teleconference

A live worldwide teleconference on successful business leadership, "The World of Business: A New Era," will be held via satellite at Coastal on Thursday, April 5 from 10:30 a.m. to 5:30 p.m. in Coastal's Admissions Building 003. The program is hosted by Coastal's Division of Extended Learning and Public Services.

Led by top international business leaders, this interactive symposium is sponsored by Women.future, a multimedia information company which focuses on business leadership issues. The fee for the event is \$259. The event is free for Coastal students, faculty and staff.

The conference will provide insights into which leadership qualities are critical for success – for both men

and women – in the new world of work; leadership skills for 2001 and beyond; attracting and retaining employees in times of rapid change; marketing your products and services to the new purchase decision-maker; and using power responsibly.

Participants from around the world will interact with more than 30 world class business leaders including Tom Peters, renowned author and management guru; Betsy Holden, president of Kraft Foods; Laura Ziskin, a leading independent film producer and studio executive; Cristina Saralegui, owner of an international television empire; Marjorie Scardino, CEO of The Pearson Group in London, which owns *The Financial Times*; and Drew

Barrymore, actress and film producer.

For more information or to register, contact Connie Lee in Coastal's Division of Extended Learning and Public Services at 349-2736 or visit the Web site www.coastal.edu/learn on the Internet.

Birthdays

March			
26	Susan Hoover	5	Clayton Kistler
27	Thomas Laut	5	Kenneth Capps
	Les Whitley	7	Renee Edwards
29	Curtis Bryant		Elmer Schruppf
30	Ed Brunette		Steve West
	Martha Green	8	Fadi Baroody
			Scott Harris
			Alan Terrell
April		9	Lee Bollinger
3	Donna Capps		Charles Gidney
4	Kristen Bauer		Ron Ingle

Business Week set for March 27 and 28

Business Week, an annual conference sponsored by the E. Craig Wall Sr. College of Business Administration, will be held March 27 and 28 in the Wall Auditorium. The event is open to all Coastal students, faculty and staff.

A tentative list of speakers follows:

Tuesday, March 27

10 to 11:15 a.m. – Accounting session

Pat Apone - finance manager,
Myrtle Beach International Airport
Ken Lott, CIA, CPA - internal auditor,
Santee Cooper

Larry Tuttle, CPA - senior partner,
Smith, Sapp, Bookhout, Crumpler
& Calliham

1 p.m. to 2:45 p.m. – Finance session

Howard Armistead - partner,
Mann, Armistead & Epperson,
Ltd.

Jan Pallares - chief financial officer,
The Sun News

Walter Standish - president,
Beach First National Bank

Wednesday, March 28

**9:30 to 10:30 a.m. – Management -
Resort Tourism management session**

Dorothy Boggs - domestic accounts
receivable/credit collections
manager, AVX Corp.

Brad Dean - chief financial officer,
Myrtle Beach Area Chamber of
Commerce

Scott Harrelson - owner,
Thoroughbreds Restaurant

**1:30 to 2:30 p.m. – Marketing -
Professional Golf Management session**

Robert Harper - director of golf
operations, Burroughs & Chapin
Company, Inc.

Pete Kinney - territory manager,
Dunlop Slazenger Group

Jill R. Watts - customer
communications director, Santee
Cooper

For more information, contact the
Wall College of Business at 349-2071.

Pop 101 to give free concert



Pop 101, Coastal's student vocal group specializing in popular music, will perform a concert Thursday, March 29 at 7:30 p.m. in Wheelwright Auditorium. The event is free and open to the public.

Under the direction of David Bankston, assistant professor of music at Coastal, the group will perform selections by the Beatles, Beach Boys, Temptations, Mamas and Papas and others.

For more information, call 349-2502.

Coastal to host "Women and Philanthropy" luncheon

Sondra Shaw-Hardy, a national authority on women's philanthropy, will be the guest speaker at the first Women and Philanthropy Program luncheon hosted by Coastal Carolina University on Friday, March 30 at noon in the Wall Building Board Room. Shaw-Hardy's presentation is "Realizing the Potential of Women's Philanthropy." The luncheon is open to the public and the cost is \$12 per person.

For more than 20 years Shaw-Hardy has been working to increase women's involvement in philanthropy during her career in development, management, adult education and public relations.

She is co-author of *Reinventing Fundraising: Realizing the Potential of Women's Philanthropy*, which won the 1996 Grenzebach Award for Outstanding Published Scholarship from the Council for Advancement and

Support of Education (CASE) and the American Association of Fundraising Counsel (AAFRC).

Shaw-Hardy is a founding board member of Women's Philanthropy Institute (WPI). WPI is a nonprofit organization that educates, encourages and inspires women to effect positive change in the world through philanthropy.

Shaw-Hardy earned a law degree from Cooley Law School in Lansing, Mich. She is an adjunct professor of public affairs at Western Michigan University (WMU). She previously was assistant vice president of external affairs at WMU where she was responsible for all fundraising efforts.

For more information, contact Coastal's Office of Special Events at 349-2569.

Professor seeks help for eldercare study

Sara Brallier, assistant professor in Coastal's sociology department, is interested in talking to adult sons and daughters who care for their elderly parents for a study she is conducting. Her research focuses on the factors that influence how adult children divide the responsibilities of providing care to their elderly parents with their siblings and how the care giving experience differs for sons and daughters. Brallier is interested in interviewing opposite sex sibling pairs (i.e., a brother and a sister) who have a parent who is 70 years or older and living outside an institutional setting. She is interested in hearing stories about the help they provide to their parents such as emotional support, running errands, dispensing medication, house-keeping, etc.

To participate in the study or for more information, call Brallier at 349-2470.

Coastal's Professional Activities Mini-Grants Awarded

The Professional Activities Mini-Grant proposals for the Spring 2001 Award Period have been evaluated, recommended by the Faculty Welfare and Development Committee, chaired by Michael Ruse, assistant professor of philosophy, and approved by the Provost. Provost John Idoux is pleased to announce the following funded activities:

E. Craig Wall Sr. College of Business Administration

- **Gerald Boyles**, professor of business administration, will serve as an officer and serve on a panel entitled "Issues in Forensic Economics" at the American Academy of Economic and Financial Experts in Las Vegas.

- **Taylor Damonte**, assistant professor of management, will co-present three papers, "The Development Of A Internship-Based Tourism Management Curriculum," "International Degree Programs in Hospitality & Tourism: How to Create a Truly International Degree Program," and "Exploring the Dimensions of Hospitality in Lodging Properties," at the International CHRIE Convention in Toronto.

- **Darla Domke-Damonte**, assistant professor of management, will co-present two papers, "Using Peer Review to Grade Case Presentations: Is there Really a Bias?," and "The Internet and Other Means of Information Exchanges as a Source of Competitive Advantage for Small Hotel Owners," at the 2001 SAM International Management Conference in Las Vegas.

- **Andy Hendrick**, associate professor of business administration, will co-present a paper titled "Golf Carts and the Americans with Disabilities Act" at the Southern Academy of Legal Studies in Business in New Orleans.

College of Education

- **Kathryn Hilgenkamp-Rodgers**, assistant professor of health, will present a paper titled "Integrating Qualitative and Quantitative Research" at NCUR 2001 in Lexington, Ky., and will present a paper entitled "Comparison of Three Online Assessments" at the 2001 HEDIR Technology Seminar at the AAHPERD Conference in Cincinnati.

- **Joseph Winslow**, assistant professor of education, will present a paper titled "Got Hack? Strategies to Reduce Online Cheating" at SITE 2001 in Orlando, Fla.

Thomas W. and Robin W. Edwards College of Humanities and Fine Arts

- **Maria Bachman**, assistant professor of English, will conduct research at Princeton University, University of Tennessee, University of Texas and New York Public Library between March 1 through August 1 for the production of a critical edition of Wilkie Collins's *Blind Love*.

- **Lee Bollinger**, assistant professor of English, will present two papers, one national survey that was funded by Wall College's Center for Economic Development and one co-researched and written with Journalism 489 students about violence in cartoons, at the AEJMC Convention in Washington, D.C.

- **Elsa Crites**, assistant professor of foreign languages, will present a paper titled "Octavio Paz in Elena Poniatowska's Palabras del arbol" at the 48th annual SECOLAS Conference in Veracruz, Mexico.

- **Daniel Ennis**, assistant professor of English, will chair a panel on "Susanna Centlivre's *A Bickerstaff's Burying*" at the 32nd Annual meeting of the American Society for Eighteenth-Century Studies in New Orleans and as an Everett Helm Visiting Fellow to conduct research on 20th century British playwright Edward Bond in the Lilly Library in Bloomington, Ind.

- **Steve Hamelman**, associate professor of English, will present a paper titled "Laying Rock and Roll to Waste: The Critical Tradition" at the Annual Joint Meeting of the Popular Culture Association and The American Culture Association in Philadelphia.

- **James Henderson**, professor of political science, will serve as an officer and will present a paper titled "Communication Amidst Chaos: Colombia's Media Versus Crime, Violence and Civil War" at the 2001 SECOLAS Conference in Veracruz, Mexico.

- **Maura Kenny**, associate professor of art, will present her art show titled "Family Matters" at the Burroughs and Chapin Art Museum in Myrtle Beach beginning July 14 through August 25.

- **Claudia McCollough**, associate professor of philosophy and religion, will chair panel discussions and judge an Ethics Bowl at the Association for Practical and Professional Ethics in Cincinnati.

- **Preston McKeever-Floyd**, senior instructor of philosophy and religion, will present a paper titled "Tell Nobody But God; the theme of transformation in *The Color Purple*" at the College English Association Conference in Memphis, Tenn.

- **Jo-Ann Morgan**, assistant professor of art, to chair a panel and present a paper titled "Serving Witness - How Uncle Tom Sustained Employment Beyond the Gilded Age" at the American Culture Association and Popular Culture Association in Philadelphia.

- **Stephen Nagle**, professor of English, will co-chair: "A Workshop on Inquiry-based Learning in Introductory Linguistics Courses" at SECOL LXIV Meeting in Knoxville, Tenn.

- **Paul Peterson**, professor of political science, will present a paper titled "For the Heart: The Last Recordings of Elvis Presley 1975-1977" at the Annual Joint Meeting of the Popular Culture Association and the American Culture Association in Philadelphia.

- **John Ramey**, assistant professor of English, will present a paper titled "Kandinsky's ABC's of Triangle, Square, and Circle as Heuristic and Hermeneutic in the Professional Writing Community" at the Annual CCCC Conference in Denver.

- **Nelljean Rice**, assistant professor of English, will chair a panel and present a paper titled "Ceremonies That Defeat Despair: things which don't shift and grow are dead things" at the 2001 College English Association Conference in Memphis, Tenn.

- **Sara Sanders**, professor of English, will co-present a paper titled "Narrative as a healing modality: The significance of context" at the Georgetown University Round Table on Linguistics in Washington, D.C. and she will co-chair and facilitate a workshop titled "A Workshop on Inquiry-Based Learning in Introductory Linguistics Classes" and co-present a paper titled "From the Particular to the Universal: Word Study as the Hook for Language Theory, Research, and Analysis" at SECOL LXIV Meeting in Knoxville, Tenn.

• **Jose Sanjines**, assistant professor of Spanish, will present a paper titled "Jorge Sanjines: His Film Aesthetics" at the SECOLAS Conference in Veracruz, Mexico.

• **Linda Smoak-Schwartz**, associate professor of English, will present a paper titled "Chaim Potok's The Chosen: Embracing Cultural and Religious Diversity in the New Millennium" at the College English Association Conference in Memphis, Tenn.

• **Susan Slavik**, assistant professor of art, will present two papers, "Seeking the Light Through Impressionist Lense" and "Down and Dirty," at the National Art Association Convention in New York.

• **Gary Stegall**, assistant professor of music, will participate as Discussion Leader at the National Conference on Keyboard Pedagogy in Chicago.

• **Brian Vernon**, assistant professor of theater, will teach workshops in jazz, tap and modern dance and conduct live interviews regarding his work with children in Cape Town, South Africa from May 21 through June 3.

• **Randall Wells**, professor of English and speech, will accompany and mentor two Coastal student presenters at NCUR at the University of Kentucky in Lexington, Ky.

Kimbel Library

• **Margaret Fain**, associate librarian, will co-present a paper titled "From the Particular to the Universal: Word Study as the Hook for Language Theory, Research, and Analysis" at the SECOL Conference in Knoxville, Tenn.

College of Natural and Applied Sciences

• **Fusun Akman**, assistant professor of mathematics, will present a report titled "Explicit Algebraic Constructions on Topological Vertex Operator Algebras" at the American Mathematical Society Regional Meeting in Columbia, S.C. He will present a paper titled "More Action in Number Theory" and accompany students making a presentation titled "Fractal Properties of Primes" at the regional meeting of the Mathematical Association of America in Montgomery, Ala.

• **Stephen Berkowitz**, senior instructor of marine science, will present a paper titled "Zooplankton: What is it? How do I get some: then what do I do with it?" at the annual conference of the South Carolina Marine Educators Association in Mt. Pleasant.

• **Teresa Burns**, assistant professor of physics, will co-present a poster session titled "Extended BEG Model of Halogenated Methanes Physisorbed on Ionic Crystals" at the meeting of the American Physical Society in Seattle.

• **Mary Crowe**, associate professor of biology, will conduct research on determining the thermal conditions experienced by solitary and droving sand fiddler crabs (*Uca pugilator*) at the Baruch Marine Lab in Georgetown from April 1 through Aug. 1.

• **Constance Edwards**, professor of mathematics, will co-present four workshops, "Modeling Alcohol Consumption," "Geometry in Motion," "Bring Geometry to Life" and "Finances," at the T3 2001 International Conference in Columbus, Ohio.

• **Jeffrey Feuer**, assistant professor of mathematics, will make a presentation titled "Incorporating the Web into the Teaching of Mathematics Courses" at MathFest 2001 meeting in Madison, Wis.

• **Terrence Fries**, assistant professor of computer science, will present two of the following three papers: "A Multiple Agent Architecture of Robotic Navigation" at the 2001 International Conference on Artificial Intelligence; or "A Multiple Fuzzy Agent Approach for Fault Diagnosis" at the International Conference on Computational Intelligence for Modeling, Control and Automation in Las Vegas; or "Fault Diagnosis in Manufacturing Systems Using Multiple Intelligent Agents" at the 2001 International Symposium on Manufacturing Systems in Rochester, N.Y.

• **Brian Gilbert**, assistant professor of chemistry, will co-present three papers with students and will present a poster session titled "Determination of Nitrite and Nitrate in Natural Waters by Surface-Enhanced Raman Scattering" at the American Chemical Society Spring National Meeting in San Diego.

• **Craig Gilman**, associate professor of marine science, will co-present a paper titled "Potential Consequences of Climate Variability and Change An Earth Science Course for Middle School Educators" at the National Marine Educators Association Conference in Victoria, British Columbia.

• **John Goodwin**, assistant professor of chemistry, will work with student assistants on completion of a Video-Chem project at Coastal this summer.

• **Sylvia Kenig Snyder**, associate professor of sociology, will chair a conference session and present two papers, "Community? What Community? Community Control of its Environment" and "Heat and Ideology: Ideology in the Classroom," at the 2001 Southern Sociological Society meeting in Atlanta.

• **Varavut Limpasuvan**, assistant professor of physics, will co-present a poster session titled "Signatures of the North Atlantic Oscillation on Stratospheric Ozone" at the 13th Conference on Atmospheric and Oceanic Fluid Dynamics in Breckenridge, Colo.

• **Ioana Mihaila**, assistant professor of mathematics, will present a paper titled "A Multiplicative-Periodic Function on $C-\{0\}$ " at the SEAM XVII Conference in Athens, Ga.

• **Linda Palm**, associate professor of psychology, and **Joan Piroch**, professor of psychology, will co-present a paper titled "Enhancing a Senior Research Course Through Curricular Innovation" at the Southeastern Psychological Association in Atlanta.

• **Stephen Sheel**, professor of computer science, and **Deborah Vrooman**, associate professor of mathematics, will co-present a paper titled "A Comparison of Neural Networks and Classical Discriminant Analysis in Predicting Students' Mathematics Placement Examination Scores" at the 2001 International Conference on Computational Science in San Francisco.

• **Susan Webb**, associate professor of sociology, will present two papers, "To Help the People: Worker Transit in Black Belt South Carolina" and "The Maids From Hell Hole Swamp," at the Southern Sociological Society Annual Meeting in Atlanta.

• **Rob Young**, assistant professor of marine science, will co-present a poster session titled "Factors Determining Patterns of Habitat Utilization by Bottlenose Dolphins in North Inlet: the potential for dolphins as an ecosystem indicator species" at the Southeastern and Mid-Atlantic Marine Mammal Symposium in Beaufort, N.C., and will co-present a paper titled "Potential Consequences of Climate Variability and Change An Earth Science Course for Middle School Educators" at the National Marine Educators Association Conference in Victoria, British Columbia.

Coastal Carolina People

Faculty and staff are encouraged to submit information to be included in the "Coastal Carolina People" section of this newsletter. Information will be published following the presentation or activity.

- **Olcay Akman** received a grant from Southern Regional Education Board to partially support his research project titled "Maximum Likelihood Predictive Density Estimation for the Length-Biased Inverse Gaussian Distribution."

- **Taylor Damonte** and **Darla Domke-Damonte** presented their paper, "International Hospitality and Tourism Management: A Joint Degree Model" at the Southeast Chapter of the Council of Hotel, Restaurant, and Institutional Educators (SE-CHRIE) conference in Atlanta on Feb. 16.

- **John Goodwin** recently presented a paper titled "Reactivity of Pentacoordinate Derivatives of (Nitro)Cobalt(III) Porphyrins" at the joint Southwest-Southeast Regional Meeting of the American Chemical Society in New Orleans. Two of his students, Valerie Echavarría and Jessica Tiedeken, also attended and presented posters of their research carried out with Goodwin during the summer of 2000.

- **Jane Guentzel's** article titled "Processes Influencing Rainfall Deposition of Mercury in Florida" was published in the March 1 issue of *Environmental Science and Technology*. Findings from the study suggest that long-range transport of reactive gaseous mercury species contributes greater than 50 percent of the rainfall mercury deposition across the southern Florida peninsula.

- **Andy Hendrick** presented a paper titled "Golf Carts and the Americans with Disabilities Act" at the annual meeting of the Southern Academy of Legal Studies in Business in New Orleans March 1 to 4. The paper was co-authored by Edgar Dyer.

Hendrick was recently appointed by the South Carolina Supreme Court to the Summary Court Judges Certification Board. He also serves as vice president of the South Carolina Summary Court Judges Association and is chair of the Statewide Municipal Judges Committee.

- **Kathryn Hilgenkamp-Rodgers** presented a paper, "Integrating qualitative and quantitative research in health promotion classes," at the National Conference for Undergraduate Research (NCUR) March 12 to 16 in Lexington, Ky.

- **Claudia McCollough** and **Preston McKeever-Floyd** attended the 14th annual Women's Studies Conference at the University of South Carolina, Feb. 22 and 23. McCollough and McKeever-Floyd were officially introduced as faculty affiliates at the awards luncheon.

- **Jill Sessoms, John Ramey** and **John Beard** presented a panel called "Subversive Reversals: Re-inscription of Genre, Character, and Language in Three Women Writers" at the Twentieth Century Literature Conference at the University of Louisville on Feb. 23. Sessoms presented "Beyond Postcolonialism: Lacan, Negation, and Women's Language in Jamaica Kincaid's *Autobiography of My Mother*." Ramey presented "Intertextuality and Post-Colonial Power in Angela Carter's *Black Venus*." Beard presented "The Subaltern Supernatural: Re-Colonizing Horror in Laurell K. Hamilton's Anita Blake Novels." The three day conference featured more than 400 paper presentations.

- **Sharon Thompson** has been elected secretary of the Executive Committee for the South Carolina Association for the Advancement of Health Education (SCAAHE). The organization's mission is to advocate for better health among South Carolinians and for the profession of health education.

Coastal Notes

Summer Job Fair

Coastal and Horry-Georgetown Technical College will hold their second annual joint Summer Job Fair on Wednesday, March 28 from 10 a.m. to 2 p.m. on Prince Lawn on the Coastal campus. In the event of inclement weather, the fair will be held in Kimbel Arena.

Recruiters from more than 25 area companies will be in attendance to interview individuals for part-time jobs, summer positions and internships. The event is open to all Coastal and HGTC students as well as the community.

For more information, contact Coastal's Office of Career Services at 349-2341.

Chanticleer Basketball

Coastal's Brooke Weisbrod and Torrey Bulter were named the 2001 Big South Conference Women's and Men's Basketball Players of the Year, respectively.

Weisbrod, a senior from Cincinnati, earned the honor after leading the Big South in scoring at 19.3 points per game and steals at 3.5 per outing. She was also named the Big South women's basketball scholar-athlete of the year.

A junior from Baltimore, Butler led the Big South with 19.8 points per game. He was also named to the Honorable Mention All-American squad by the Associated Press.

Did You Know?

The date, time and location of Coastal's Cultural Celebration has been changed. The event will be held Wednesday, April 18 from 11 a.m. to 3 p.m. at Prince Lawn.

More information on this year's Cultural Celebration will appear in the next edition of this newsletter.

Coastal Notes

Coastal to host Math Contest

The 22nd annual Coastal Verizon Math Contest will be held in Wall Auditorium on Friday, March 30. The purpose of this annual event is to stimulate interest in mathematics among high school students. More than 20 local and regional schools and 250 students are expected to compete for awards and prizes. A trivia contest will be held at 1:45 p.m. followed by an awards ceremony at 2 p.m.

Ronald Lackey Service Award

The Ronald D. Lackey Service Award Selection Committee invites nominations for the Ronald D. Lackey Service Award, which will be presented at the Annual Honors Convocation on Tuesday, April 24.

Students eligible for this award must meet the following criteria:

- Senior status (graduating in 2001) and academic good standing;
- distinguish themselves in service to the campus;
- involved significantly in campus organizations, groups and activities;
- involved in a leadership role on campus; and
- have contributed significantly to the quality of campus life.

For info or a nomination form, contact the Office of the Vice President for

Student Affairs at 349-2300. Deadline for nominations is Friday, March 30.

Carpenter recognized

Barbara West Carpenter, International Grand Basileus of Zeta Phi Beta Sorority, Inc., was the guest of honor during a reception recently given by the Mu Rho and Mu Kappa Zeta chapters of the sorority. Carpenter was on campus with the Southern Association of Colleges and Universities (SACS) accreditation team that visited Coastal in February. Advisers for Zeta Phi Beta are Mollie Bethea-Floyd and Geraldine Dixon.

Fall 2001 Advance Registration

Advance registration will be held April 2 to 13. Registration will be limited according to the following schedule:

Monday, April 2

- Seniors (90 credit hours or more)
8:30 a.m. to noon
- Juniors (60 to 89 credit hours)
1 to 5 p.m.

Tuesday, April 3

- Sophomores (30 to 59 credits hours)
8:30 a.m. to noon
- Freshman (up to 29 credit hours)
1 to 5 p.m.

Open registration begins Wednesday, April 4 for all others.

Campus Calendar

Monday, March 26

- Introduction to Frontpage Web Page Design workshop, 9:30 a.m. to noon, Society House Computer Lab

Tuesday, March 27

- Kimbel Lecturer Series, Robert Neyland, H.L. Hunley archaeologist, 7:30 p.m., Wheelwright Auditorium

Wednesday, March 28

- African-American Poetry Reading, 12:30 p.m., Wall Auditorium

Thursday, March 29

- South Carolina Welfare, lecture by Marilyn Edelho, S.C. Department of Social Services, 7 p.m., Wall Auditorium
- Pop 101 Concert, 7:30 p.m., Wheelwright Auditorium

Friday, March 30

- Women and Philanthropy luncheon, noon, Wall Board Room

Friday, April 6

- Third Annual Wheelwright Gala featuring *When Swing Was King*, 8 p.m., Wheelwright Auditorium

Saturday, April 7

- *A Sense of Wonder*, 7:30 p.m., Wall Auditorium

CHANTICLEER ATHLETIC EVENTS

Monday, March 26

- Women's Golf: at UNC Wilmington Invitational, through March 27

Tuesday, March 27

- Women's Tennis: at Campbell

Wednesday, March 28

- Softball: Louisiana State at Coastal, 3 p.m.
- Baseball: East Carolina at Coastal, 6 p.m.

Friday, March 30

- Men's and Women's Outdoor Track and Field: at Raleigh Relays, through March 31

Saturday, March 31

- Baseball: UNC Asheville at Coastal, noon

Sunday, April 1

- Men's and Women's Tennis: Winthrop at Coastal, TBA
- Baseball: at UNC Asheville

Monday, April 2

- Men's Golf: at Lonnie D. Small Collegiate, through April 3
- Women's Golf: Coastal at Campbell University Fighting Camel Classic, through April 3

Wednesday, April 4

- Softball: Coastal at UNC Wilmington
- Baseball: Coastal at East Carolina

Thursday, April 5

- Softball: College of Charleston at Coastal, 4 p.m.

Friday, April 6

- Men's and Women's Outdoor Track and Field: at Duke Invitational

Saturday, April 7

- Softball: at Charleston Southern
- Men's and Women's Tennis: at Liberty
- Women's Golf: at Lady Dukes Invitational, through April 8

Sunday, April 8

- Softball: Winthrop at Coastal, 2 p.m.

Campus Dining

The CINO Grille, located in the Student Center, is open Monday through Thursday from 7 a.m. to 10 p.m.; Friday from 7 a.m. to 7 p.m.; and Saturday and Sunday from 3 to 8 p.m. Selections are available from the Grille, the Deli or Pizza Hut menu items.

The Commons, featuring an all-you-can-eat menu, is located adjacent to the residence halls. Meal costs and the hours of operation are as follows:

Monday through Friday:

- Breakfast: \$3.50; served from 7 to 9:30 a.m.
- Continental Breakfast: 9:30 to 10 a.m.
- Lunch: \$4.50; served from 11 a.m. to 2 p.m.
- Dinner: \$5; served from 5 to 7:30 p.m.

Saturday and Sunday:

- Brunch Buffet: \$5.50; served from 10:30 a.m. to 1:30 p.m.
- Dinner: \$5; served from 4:30 to 6:30 p.m.

For more information, contact Denise Elliott at 349-2365.

Week of March 26

Monday: London Broil; Beef and Broccoli; Chicken Creole

Tuesday: Pork Chops; Chicken and Dumplings; Catfish

Wednesday: Chinese Buffet

Thursday: Chicken Florentine; Cheese Quesadillas; Fried Pork Chops

Friday: Hawaiian Ham; Chicken Bog; Philly Cheese Sandwich

Week of April 2

Monday: Blackened Pork; Meatloaf; Grilled Chicken; Pasta Primavera

Tuesday: Teriyaki Steak; Hordogs; Chicken Alfredo

Wednesday: Chinese Buffet

Thursday: Shepard's Pie; Grilled Pork Chops; Chicken ala King

Friday: Grilled Chicken; Manicotti; Grilled Sausage

Note: Menus are subject to change due to product availability. Food Services offers a 10 percent discount to all Coastal faculty and staff.

Coastal Carolina

UNIVERSITY NEWSLETTER

Office of Marketing Communications

Coastal Carolina University

P.O. Box 261954 • Conway, SC 29528-6054

This Issue:

- *Wheelwright Gala to be held April 6*
- *One-woman play A Sense of Wonder set for April 7*
- *Coastal's Professional Activities Mini-Grants awarded*
- *CCU to participate in live worldwide teleconference*

• Friday, April 6, 2001 •

Wheelwright Gala 2001



When
Swing
Was King

*The Sights and Sounds
of the Big Band Era -*

Information: 349.2569

Proceeds from the 2001 Wheelwright Gala will be used to purchase Steinway pianos for the Thomas W. and Robin W. Edwards College of Humanities and Fine Arts.